

## VESA Stand Setup Instructions Peau Productions 2012

### Items Included:

- 5mm T Handle Wrench
- 6mm T Handle Wrench
- ½ Inch Bolt
- ¾ Inch Bolt + Flat Washer
- 1 Inch Bolt
- Anchor Bolt
- Single Flange Washer
- Double Flange Washer (\*may be replaced by Single Flange Washer)
- Inside Base Bars:
- Outside Base Bars:
- Base Connectors:
- Triangle Braces
- Wheel Support Bars:
- L Braces
- Single End Plastic Cover
- Double End Plastic Cover
- Wheel
- Anchored Vertical Double Bars
- Vertical Double Bars
- Center Support Bar
- Square Braces
- Pivots
- VESA Bars

Begin by laying out all the pieces and separating everything on a large table or area of floor.

Here are the different bolts you will have:



Below are the T-Handle Allen Wrenches you will be using:



Assembly:

Grab the two **Inside Base Bars** and the two short **Base Connectors** and lay them out as such with outside end Anchor Bolt holes on the outside (see arrow):



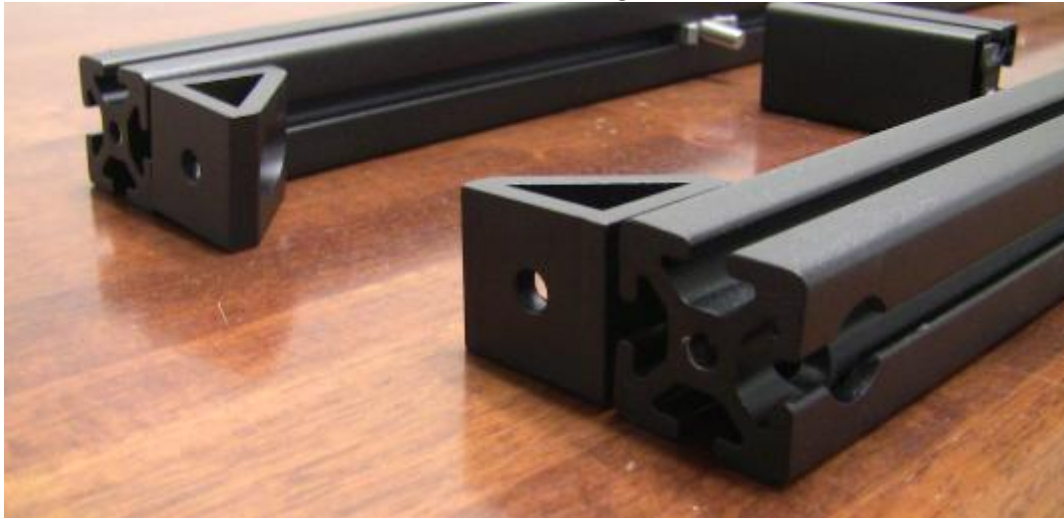
Grab 4 of the **Triangle Braces** and 8 of the  $\frac{3}{4}$  Inch Bolts + Flat Nuts:



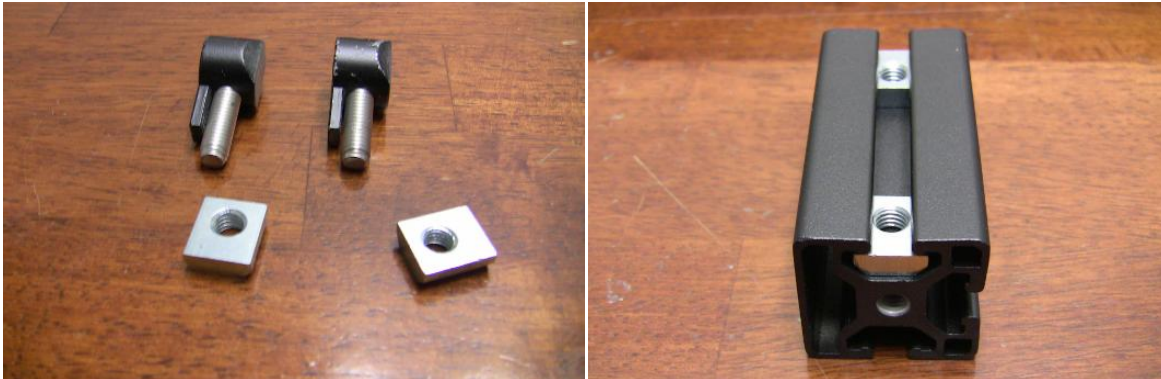
Secure a bolt in each brace as follows:



Slide them onto the inside of the bars as such and tighten with the 5mm Wrench:



Take two **Anchor Bolts** apart and slide the nuts into the each top rail of the **Base Connectors**:



Take a Double Flange (Single Flange if no Doubles included) and slide into inside rail of **Inside Base Bars**:



Line Up With Holes

Tighten all 4 bolts with 5mm Wrench:



Slide two **Nuts** from the  $\frac{3}{4}$  Inch Bolts into **Outside Base Bar (flat side up)**. Slide 2 **Anchor Bolts** into rail also as shown (metal tab away from Inside Bars). Put  $\frac{3}{4}$  Inch Bolts inside **Triangle Braces** as shown:



Tightening the  $\frac{3}{4}$  Bolts may be difficult as you have to line up the nuts so be patient. Once tight, slide the **Anchor Bolts** into the Anchor holes and tighten with the 6mm Wrench. Whacking them with the rubber wrench end may help get them into the hole.



Grab the 4 **Wheel Support Bars**, 4 **Single Flanges** with 4 **1 Inch Bolts**, 4 **L Braces**, 8  $\frac{3}{4}$  **Inch Bolts + Nuts**:



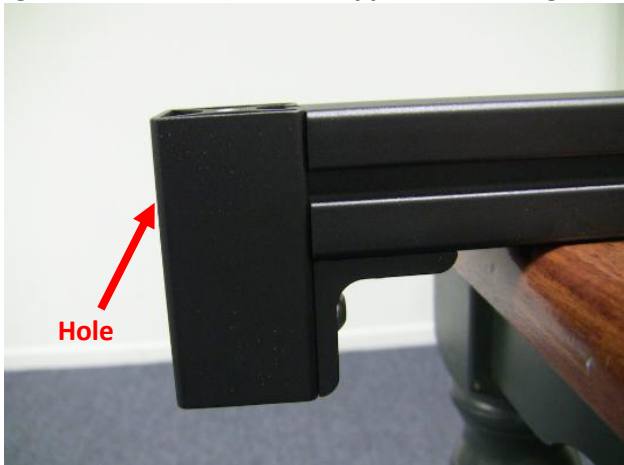
Assemble  $\frac{3}{4}$  **Inch Bolt + Nut** on each **L Brace**:



Slide onto **Outside Base Bar** and tighten:



Attach  $\frac{3}{4}$  **Inch Bolt + Nut** and **1 Inch Bolt + Single Flange** as shown. Slide **Wheel Support Bar** and tighten:



Take **½ Inch Bolt** and **Single End Plastic Cover** and screw onto top as shown. Screw **Wheel** from bottom.



Repeat for other 3 corners. You now have the base completed:



Lay out **Anchored Vertical Double Bars**, **Center Support Bar**, **2 Anchor Bolts**, and the **4 upper parts of Anchor Bolts** from earlier:



Attach **Anchor Bolts** as shown with smooth faces of Vertical Bar on outside:



Insert 4 **Anchor Bolts** tops in bottom anchor holes as shown:



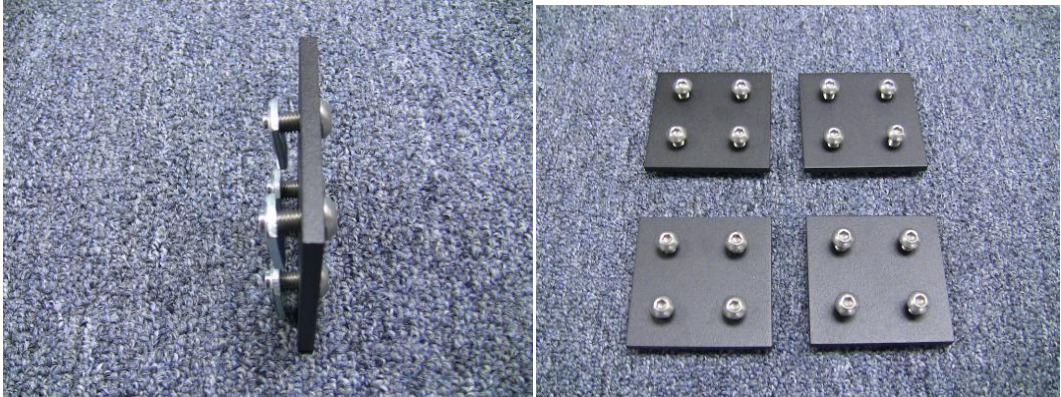
Attach vertical piece with Anchor Bolts to the nuts on **Base Connectors** from earlier:



Lay out **Vertical Double Bars, Square Braces, and 16 3/4 Inch Bolts + Nuts:**



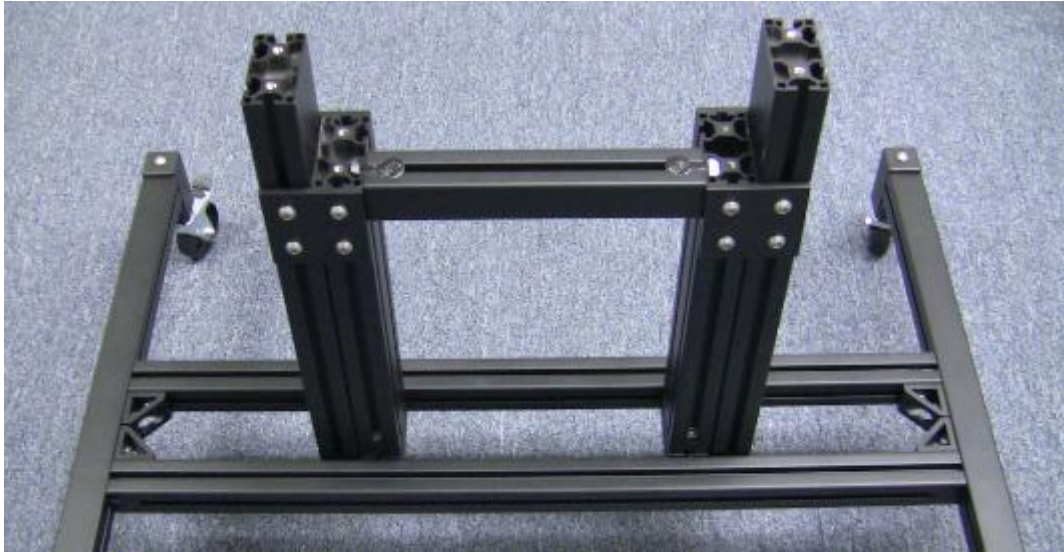
Attach bolts and nuts as shown:



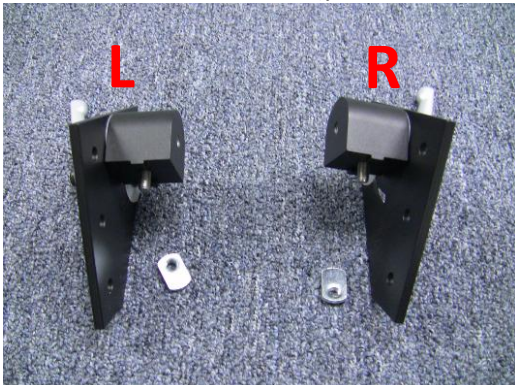
Slide **Square Braces** onto **Anchored Vertical Double Bars**:



Slide **Vertical Double Bars** with smooth sides facing each other and tighten bolts as shown:



Unscrew nuts from **Pivots** (you will not be using these nuts). Identify the Left and Right pivots:



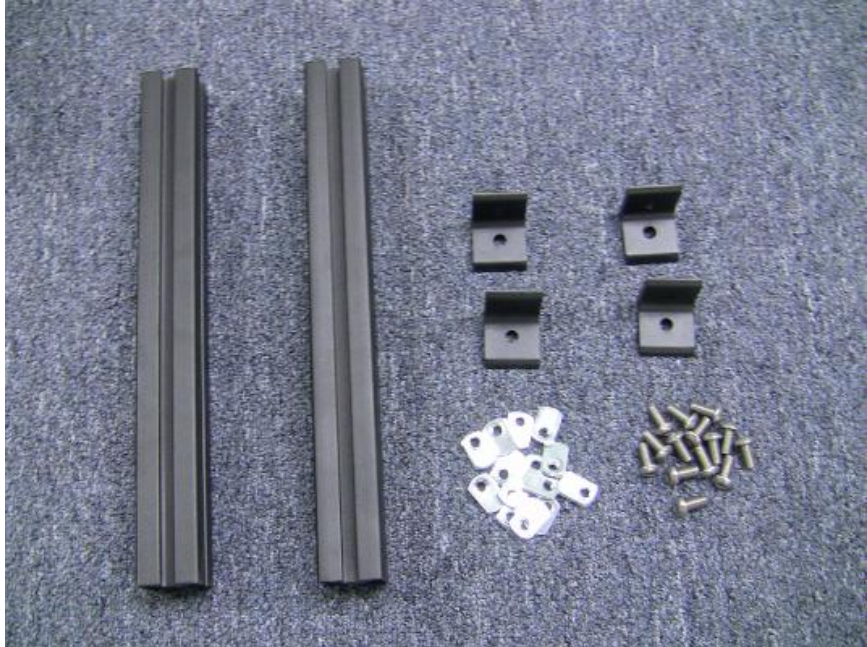
Unscrew handle a little and slide bolt head into outside slot on raised vertical bar as shown:



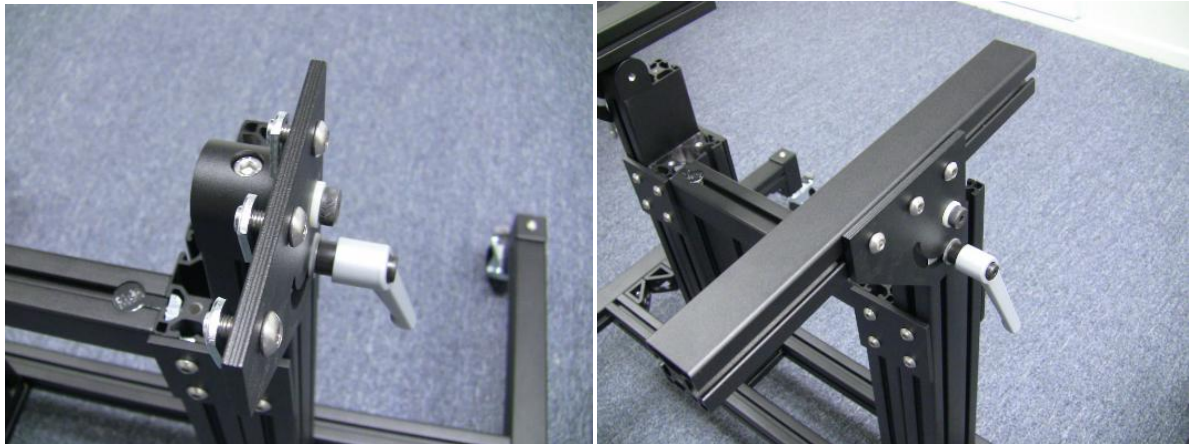
Rotate and tighten using 6mm Wrench. Attach other side:



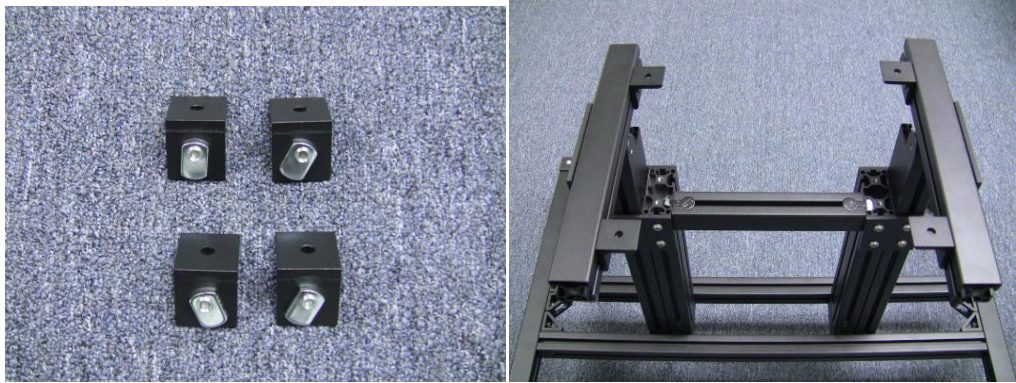
Lay out VESA Bars, 4 L Braces, 10 3/4 Inch Bolts + Nuts:



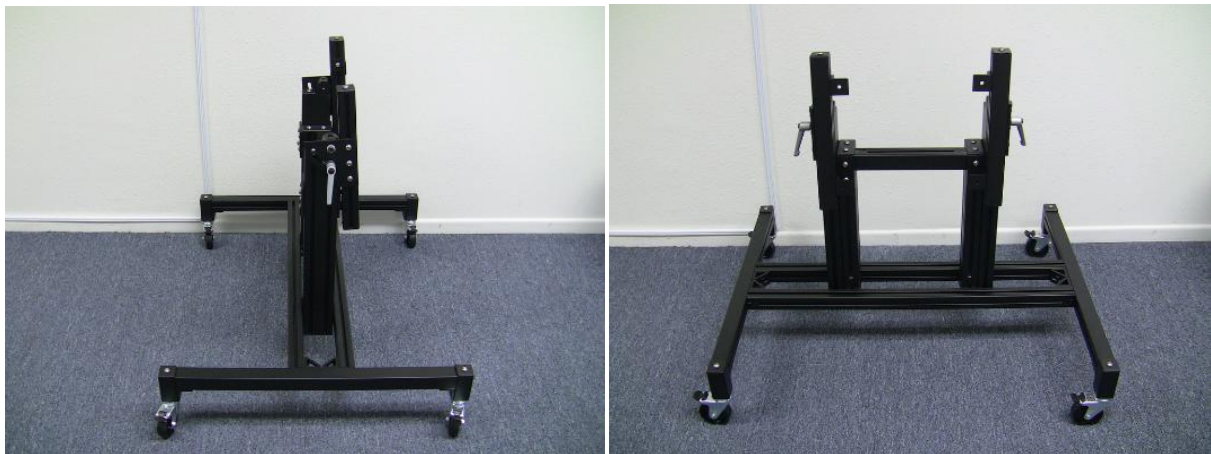
Attach bolts and nuts as shown in each pivot bracket and slide VESA Bars into and tighten loosely.



Attach bolts and nuts on each L Brace, slide into VESA Bars and tighten loosely.



Attach remaining **Single and Double End Plastic Covers** to bar ends. Your stand is now complete.



The loosely tightened bolts were so that mounting your TV onto the stand will be easier. Some people find it easier to assemble the VESA Bars and L Braces to their TV first and then simply attach at the pivot braces. To adjust the height simple unscrew the bolts on the vertical bars and retighten. When the pivot handle is tightened, you can pull it out and position it anywhere you would like (typically downward). To lock the wheels in place simply push down on the black tab on each wheel.

If you got the optional shelf, simply attach as shown:

